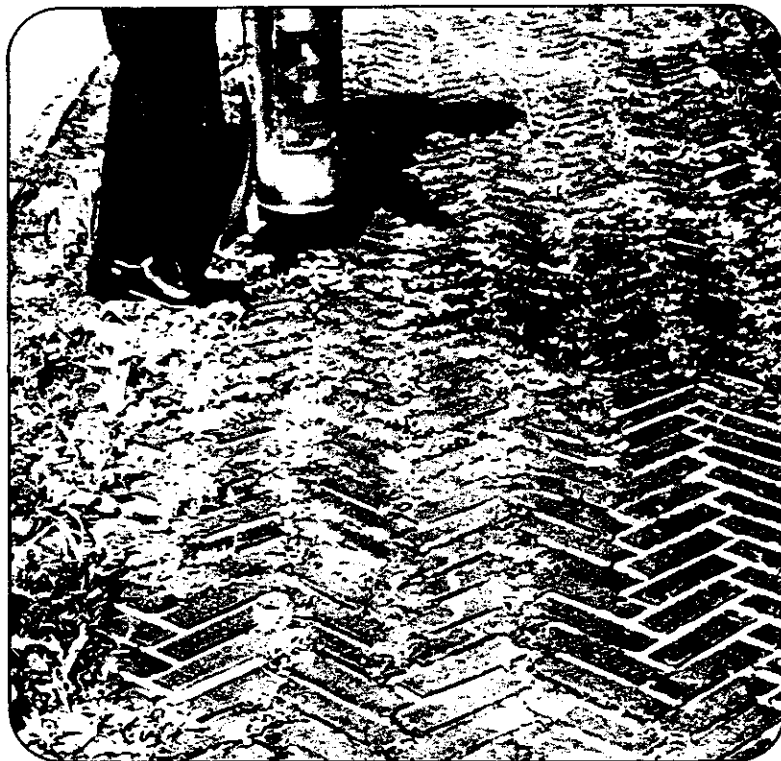


GLOBE CHEMICAL COMPANY
 2833 WASHINGTON ST
 AVONDALE ESTATES, GA 30030

GLOBE BROMO

TOTAL WEED KILLER



FEATURES

- Kills unwanted vegetation quickly. . totally.
- Regrowth prevented for long periods
- Non-selective.
- Contains anti-drift agent
- Removes "fire hazard" vegetation
- No dilution or agitation required
- EPA registered.

USES

- Parking Lots
- Fence rows
- Loading Ramps
- Railroad Sidings
- Storage Yards
- Driveways
- Walks
- Tennis Courts

Controls:

- Ryegrass
- Foxtail
- Wild Oats
- Crabgrass
- Ragweed
- Bluegrass
- Purpletop
- Saltgrass

..... and many other weeds and grasses.

TECHNICAL DATA

PROPERTIES

Form	Liquid
Odor	Mild
Color	Amber
Storage Stability	40°F - 90°F
Cold Stability	Keep from freezing
Specific Gravity (H ₂ O = 1)	0.85
Free Acid	None
Corrosion Factor	None
Flash Point	165°F
Boiling Point	364°F - 585°F
Vapor Pressure (mmHg)	0.4 @ 20°C
Vapor Density (Air = 1)	5.0
Solubility in Water	Insoluble
Evaporation Rate (B.Acet. = 1)	1.0
Wt. per gallon	8 lbs. 2 oz.

SAFETY

Label use directions should be followed carefully. OSHA Material Safety Data Sheet available.

USAGE

Apply any time of the year (except when ground is frozen). Best results are obtained after predominate species are well established in late spring or early summer. Before treating, calibrate equipment to insure uniform coverage of the areas to be treated. Measure out the proper amount and apply.